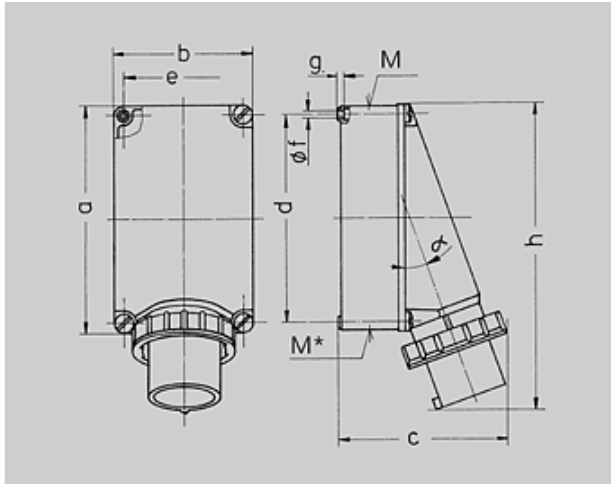




Part no. : 1107

**Wall mounted inlet**


Drawing	Amp.	63			125	
		Poles			4	5
<b>2 MB 36</b>						
<b>Dim. in mm</b>						
a		170	170	170	264	264
b		118	118	118	163	163
c		171	171	171	205	205
d		136	136	136	240	240
e		104	104	104	140	140
f		6,1	6,1	6,1	8,1	8,1
g		6	6	6	8	8
h		250	250	250	355	355
M		40	40	40	50	50
M*		2x40	2x40	2x40	50	50
α		25°	25°	25°	20°	20°
Max. cabel diam. (mm)		32	32	32	38	38
Terminal for cond. cross section (mm²) min.-max.		4	4	4	16	16
		-10	-10	-10	-35	-35

 Article-group : **2048**

voltages : 230V

rated current : 63A

pole : 3 pole







IP protection types : IP67

position of ground contact : 6h

packing unit : 0005

weight : 825 g

**PART NUMBERS**

	V	<b>110V</b>	<b>230V</b>	<b>400V</b>	<b>500V</b>	<b>&gt;50-500V</b>	
	Hz	50,60	50,60	50,60	50,60	100-300	300-500
	colour						
	amp.						
<b>63 A</b>	3	1216	<u>1107</u>	1217			
	4	355	356	357	358		
	5	359	360	361			
<b>125 A</b>	4	362	363	364	365		
	5	366	367	368			